

Depressants – User Recognition

- Drooped Eyelids
- Nystagmus
- Drunken Behavior
- Impaired Balance
- Impaired Memory
- Disorientation
- Flaccid Muscles
- Poor Muscle Control

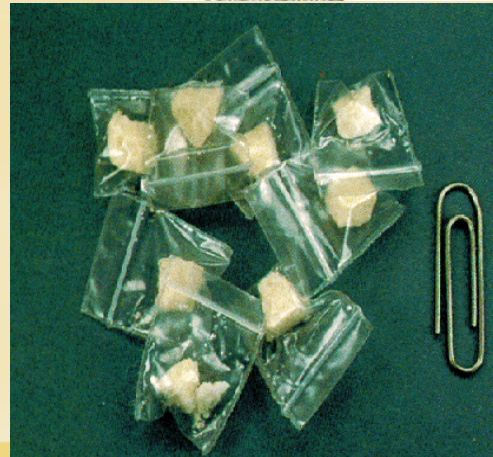


Central Nervous System Stimulant Drugs

- Cocaine
- Crack
- Crystal-Meth
- Ice, Crank
- Ecstasy



Amphetamines





METH KIT



LIGHT BULB PIPE



■ METH MOUTH

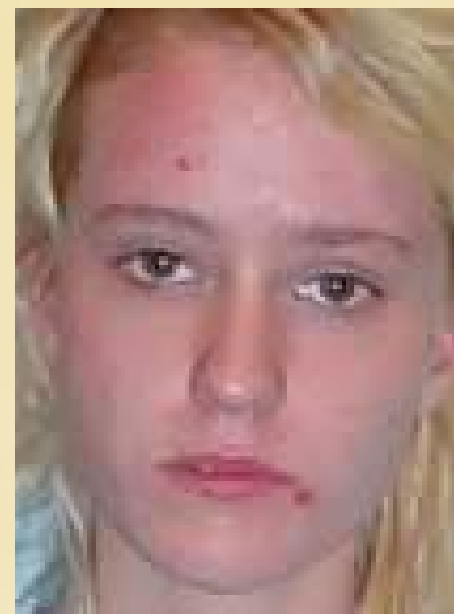


Photos courtesy of: Sharlee Shirley, RDH, MPH; Jim Cecil, DMD, MPH, University of Kentucky, School of Dentistry

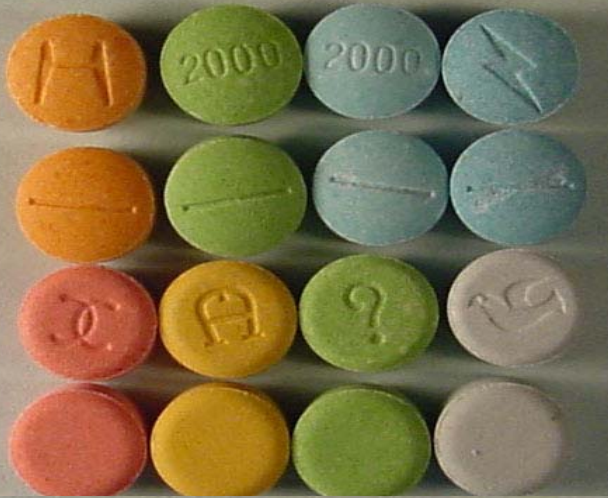


AURICO REPORTS

Crank Bugs



MDMA (ECSTASY)



CENTRAL NERVOUS SYSTEM STIMULANT RECOGNITION

- **Dilated Pupils**-more than 50% bigger than colored iris.
- **Tremors, Hyperactive**
- **Sweating, Dry Mouth**
- **Red Nose, Sniffling**
- **Paranoia, Depression, Aggression, and Malnutrition**



Narcotics - User Recognition



- **Pin-Pointed Pupils**
- **Fixed, Unresponsive to Light Changes**
- **Facial Rubbing & Scratching**
- **Deepening of Voice.**
- **Slowed, Sedated, Dreamy State**

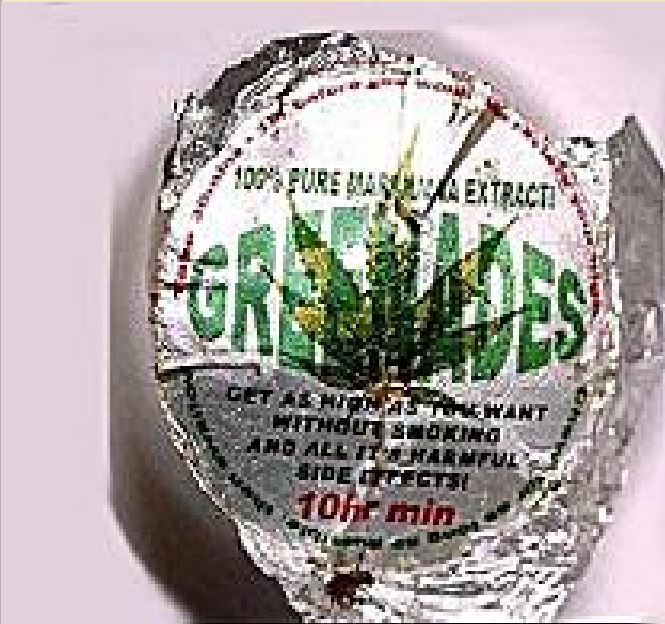


Cannabis - Identification

- Marijuana
- Hashish
- Hash Oil
- T.H.C.
- Marinol



MARIJUANA GUMBALLS

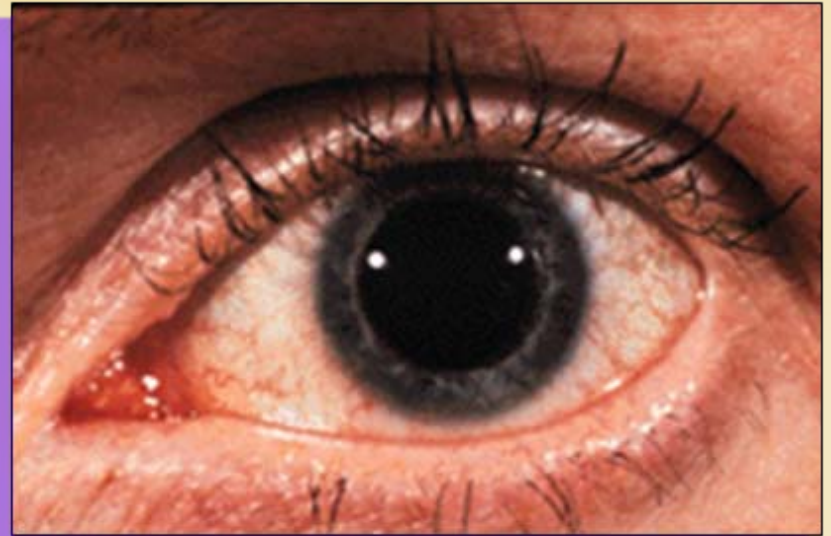


MARIJUANA CANDYBARS



Cannabis— User Identification

- Pupil Dilation, Lack of Pupil Tracking, Drooped Eye Lids,
- Red, Bloodshot-Eyes
- Eye Lid Tremor
- Coated Tongue
- Depth Perception
- Slow Body-Clock
- Odor of Burnt Marijuana



Medical Mimics— Cannabis

Head injury may produce drowsiness, lack of situational awareness, amnesia, loss of orientation, and **UNEQUAL PUPILS:**

